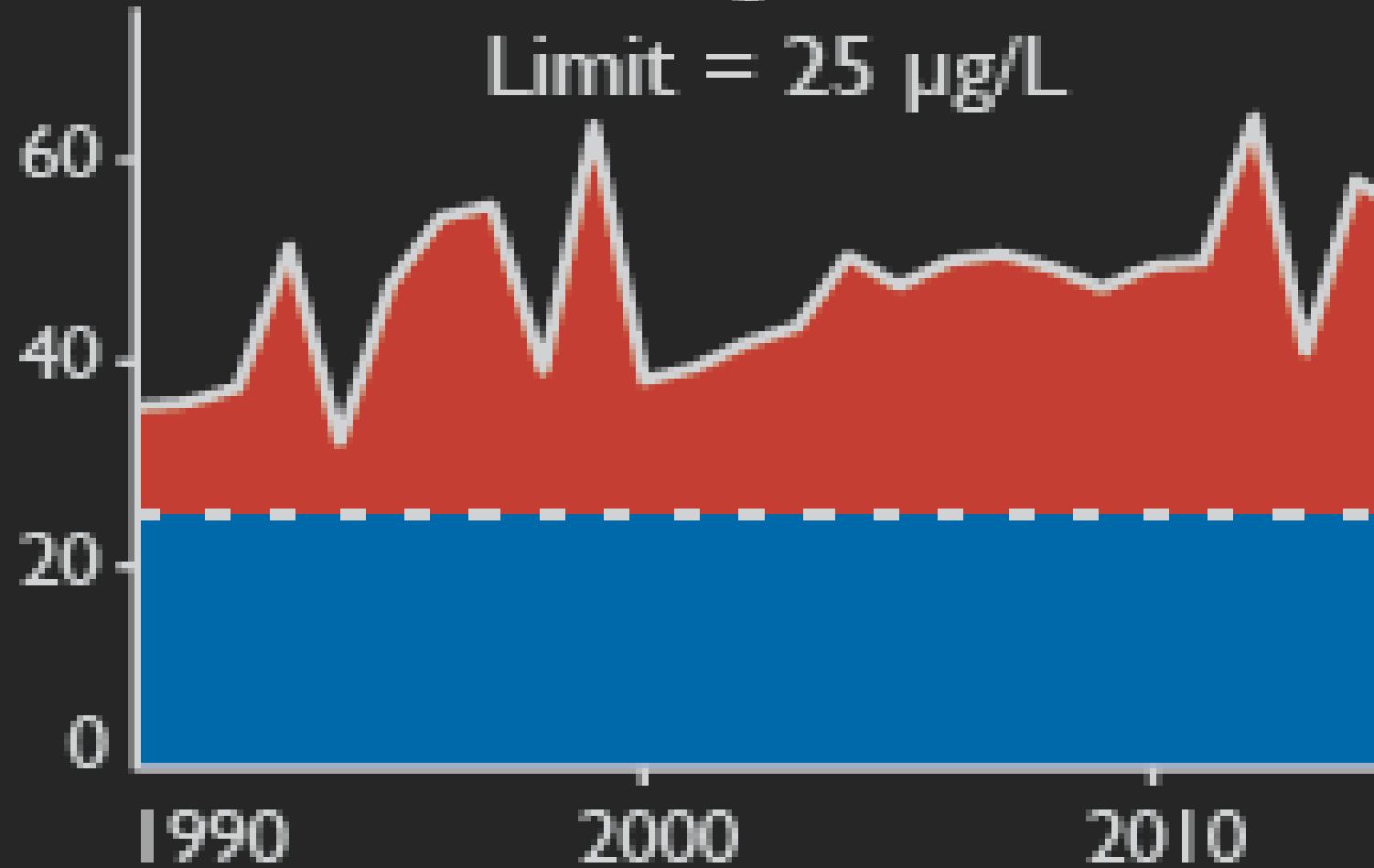
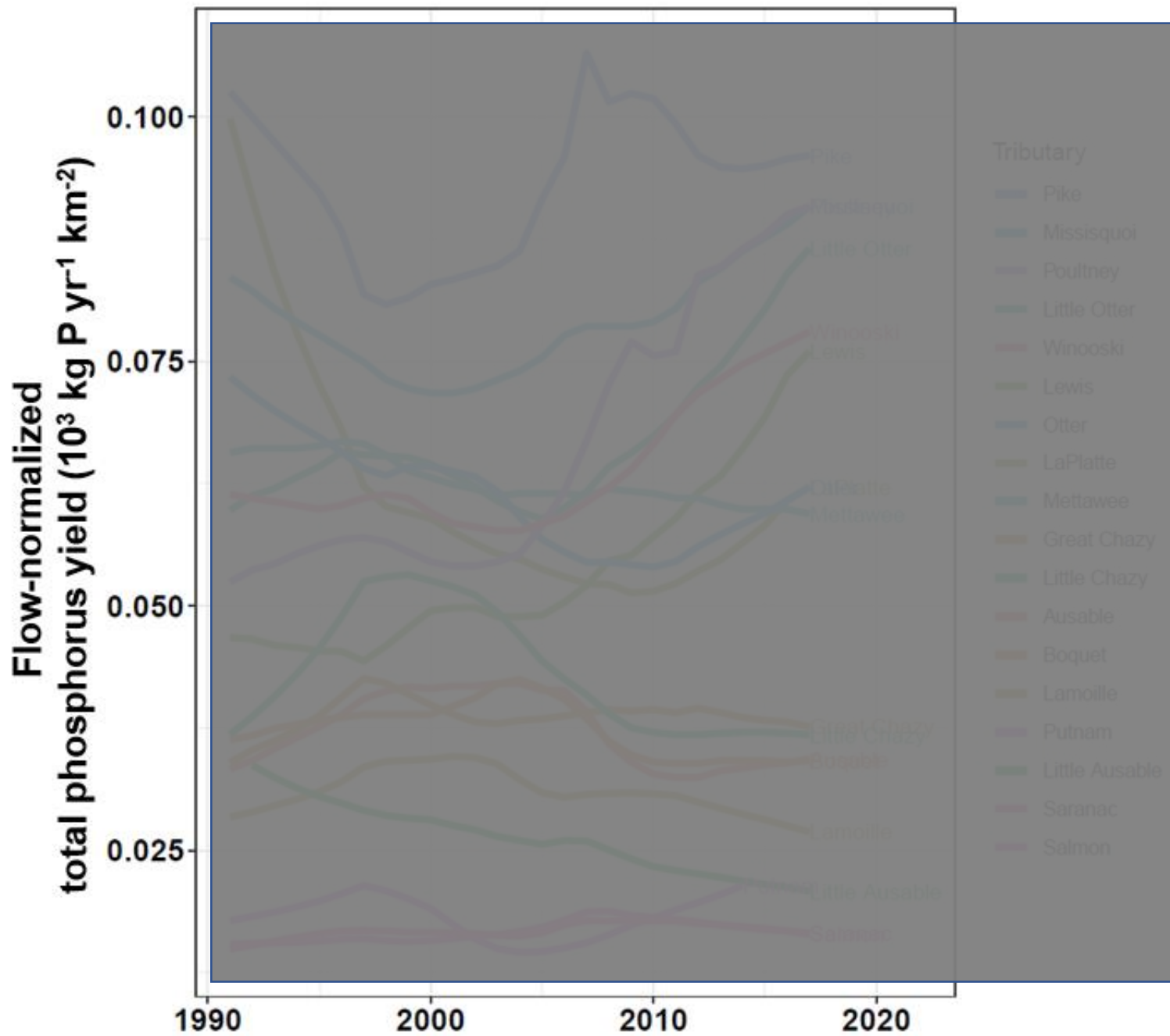


MISSISQUOI BAY

Limit = 25 $\mu\text{g/L}$





Flow-Normalized Total Phosphorus Yield
(10^3 Kg P / year / km²)

WHAT IS THIS??????

Flow-Normalized Total Phosphorus Yield (10^3 Kg P / year / km²)

Flow-Normalized:
flow with inter-annual variability removed

Flow-Normalized Total Phosphorus Yield
(10^3 Kg P / year / km²)

Flow with inter-annual variability removed

Flow-Normalized Total Phosphorus Yield

$(10^3 \text{ Kg P / year / km}^2)$

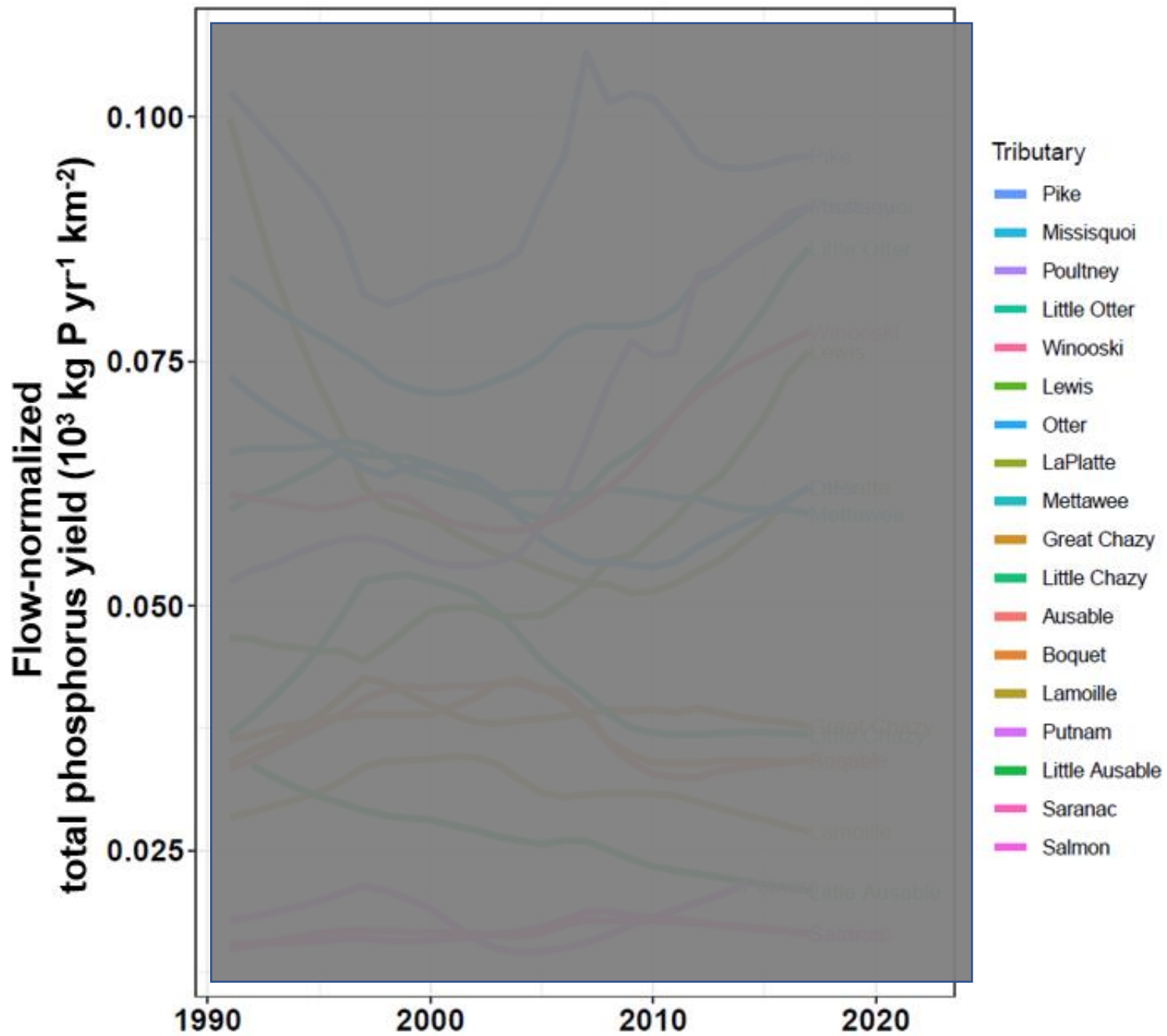
Flow with inter-annual variability removed

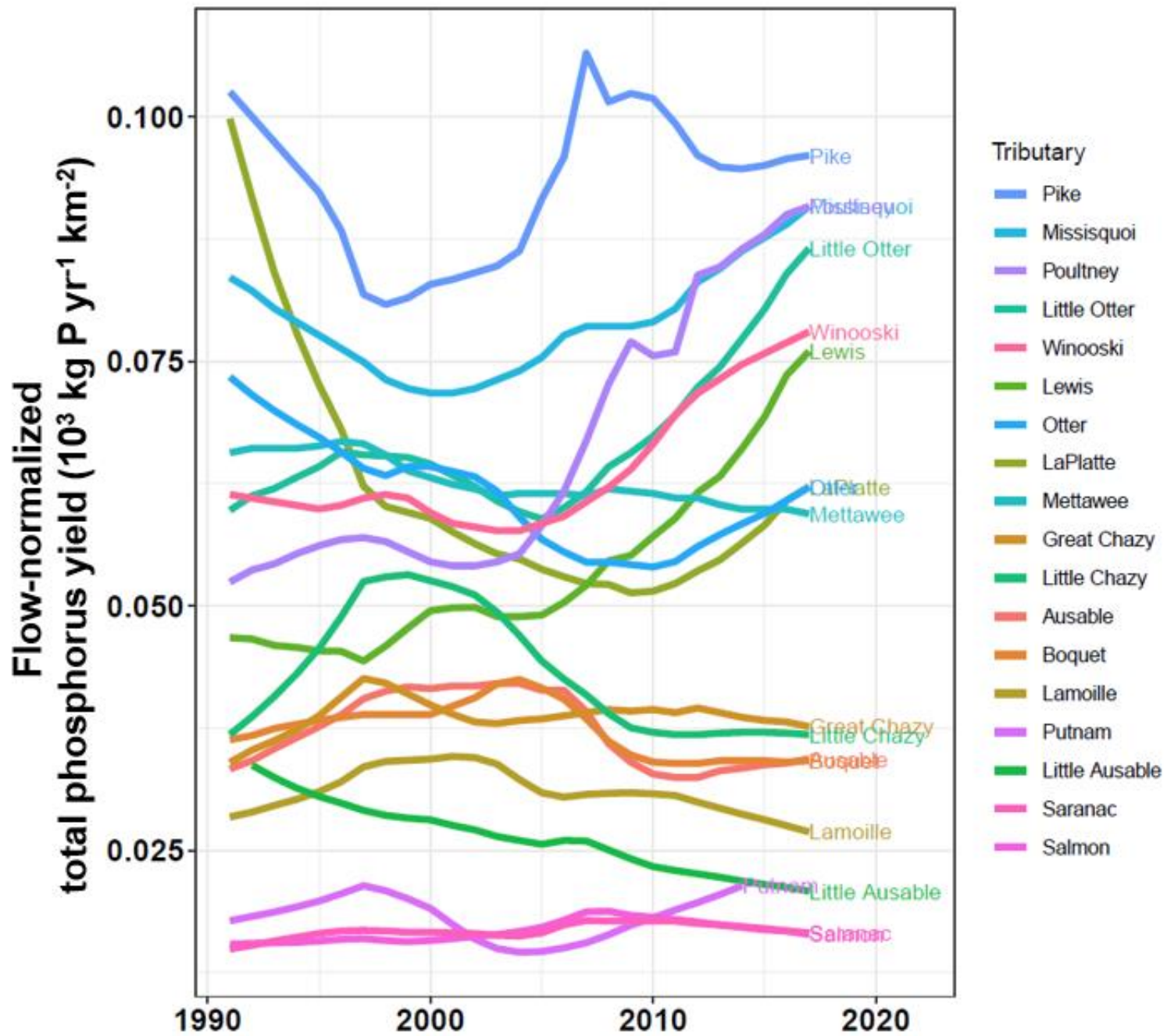
1 Metric Ton of Phosphorus per year per km^2

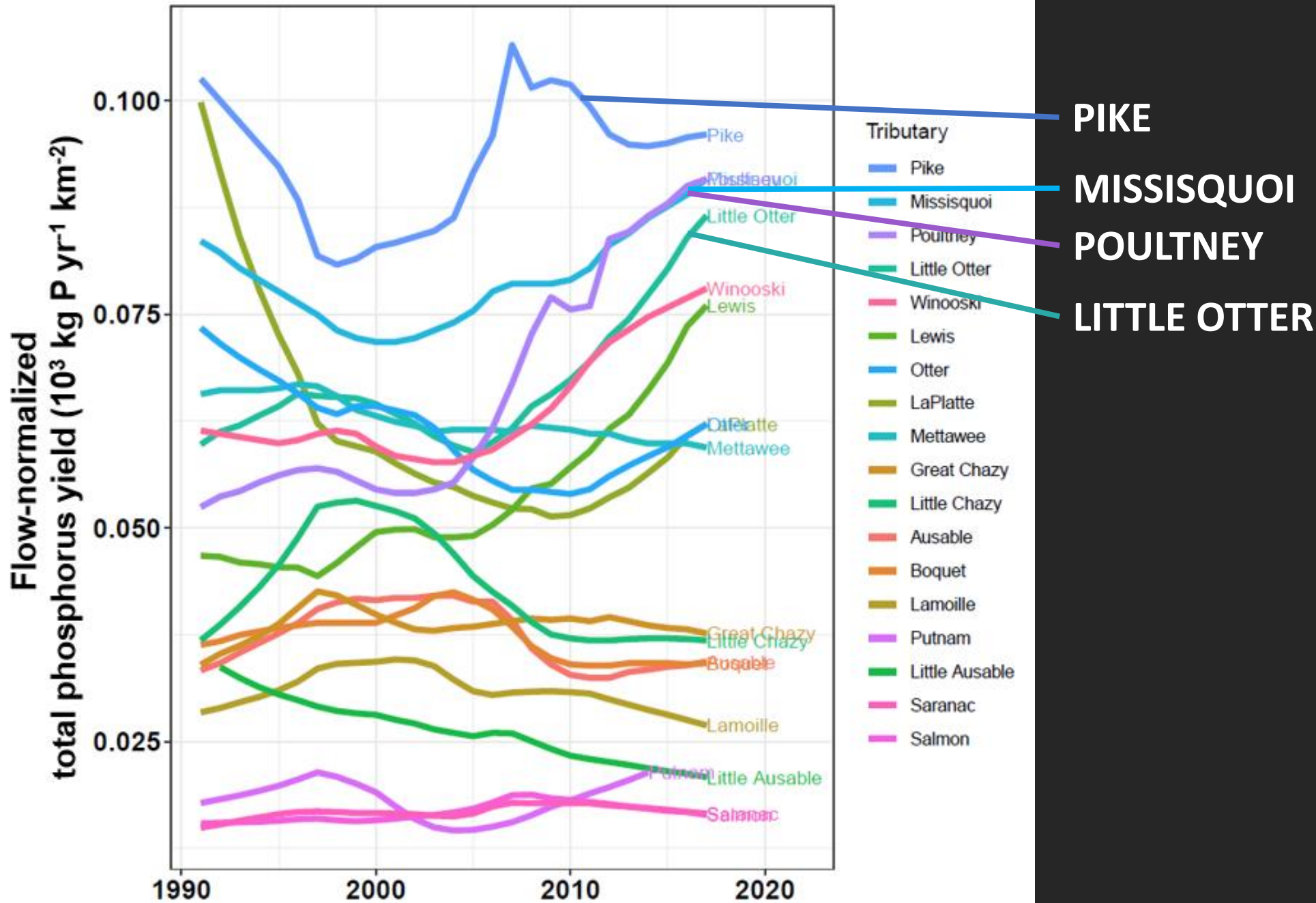
Flow-Normalized Total Phosphorus Yield (10^3 Kg P / year / km²)

Flow with inter-annual variability removed

Effect of size of drainage area removed







MISSISQUOI BAY

Limit = 25 $\mu\text{g/L}$

