

# URBAN HYDROLOGY AND BASIN RESILIENCE TO EXTREME EVENTS

---

Daniel Demers

Advisors: Beverley Wemple, Stephanie Hurley, and Arne Bomblies



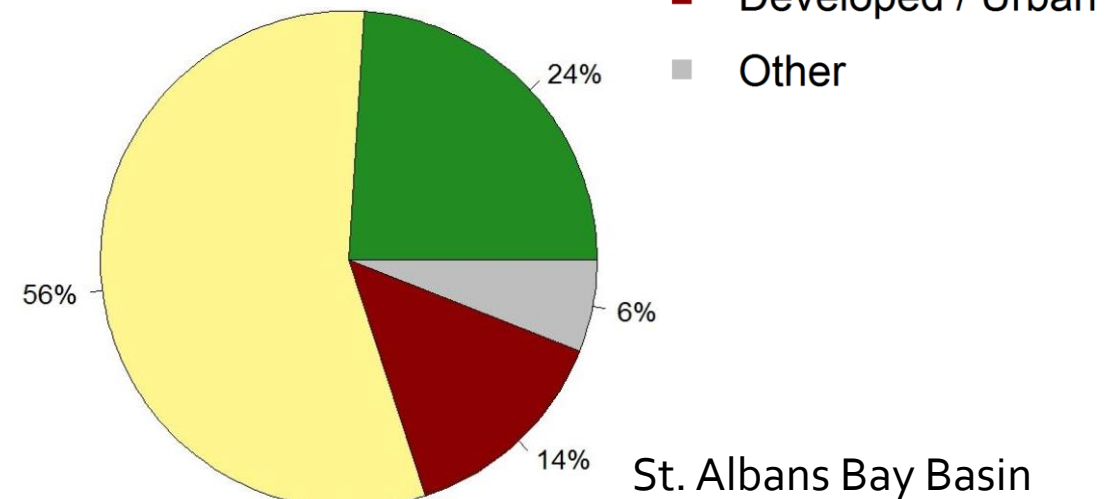
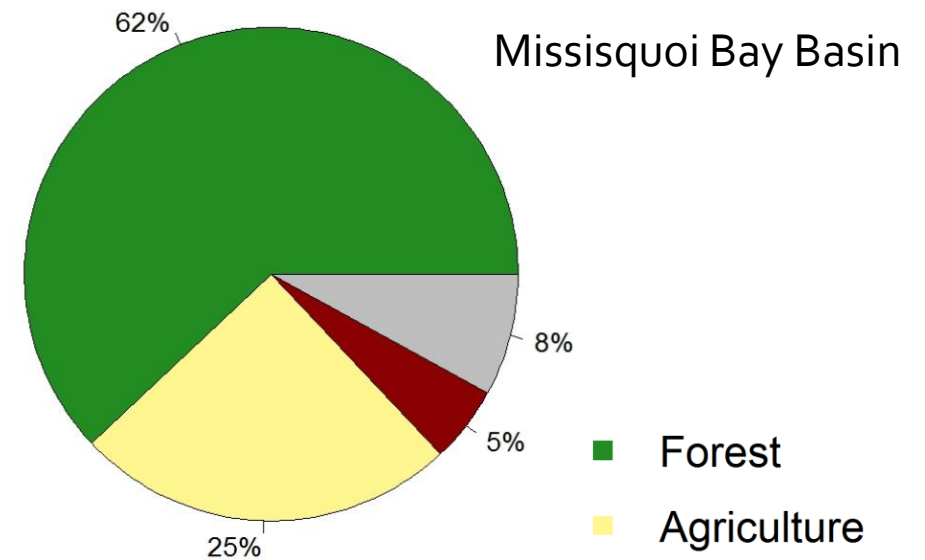
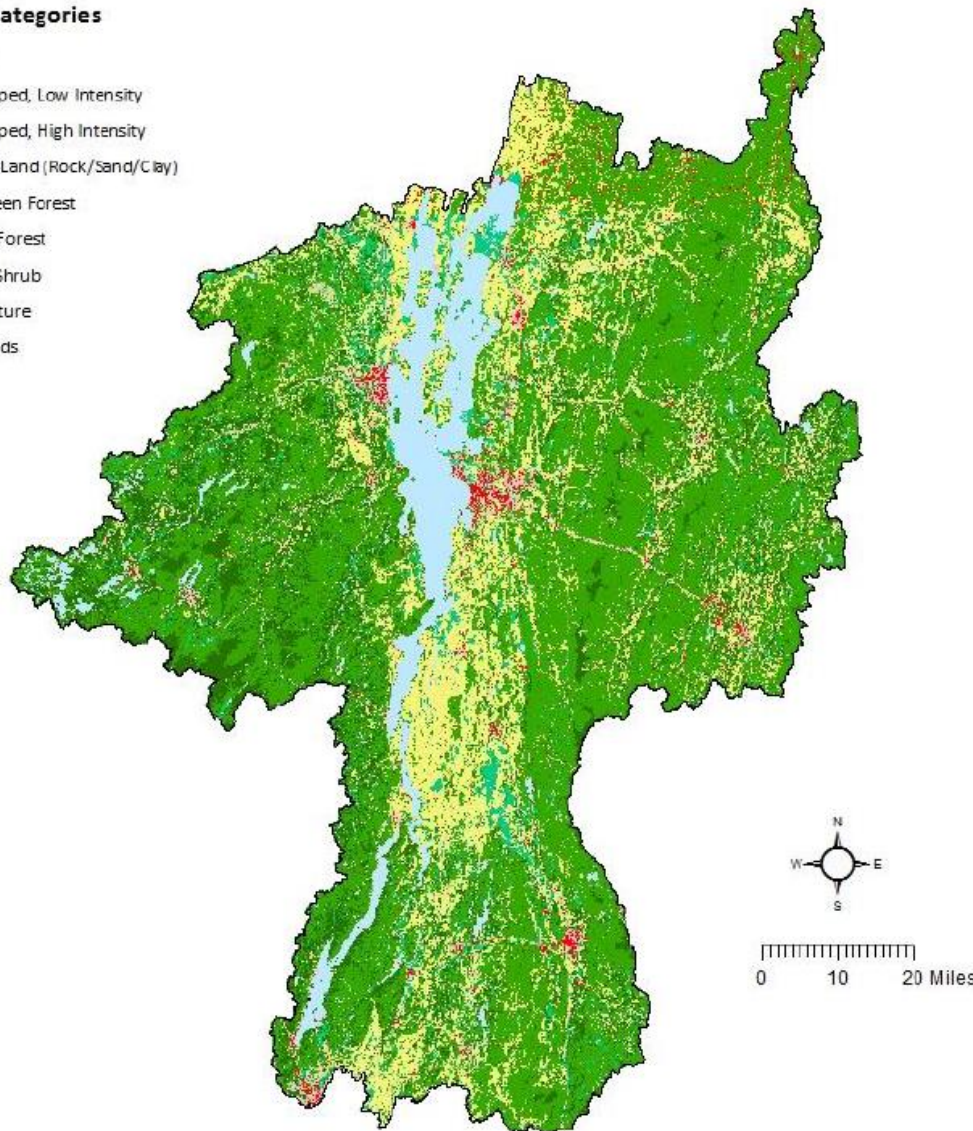
All Hands Meeting  
12 June 2018

VT EPSCoR Grant No. NSF OIA 1556770

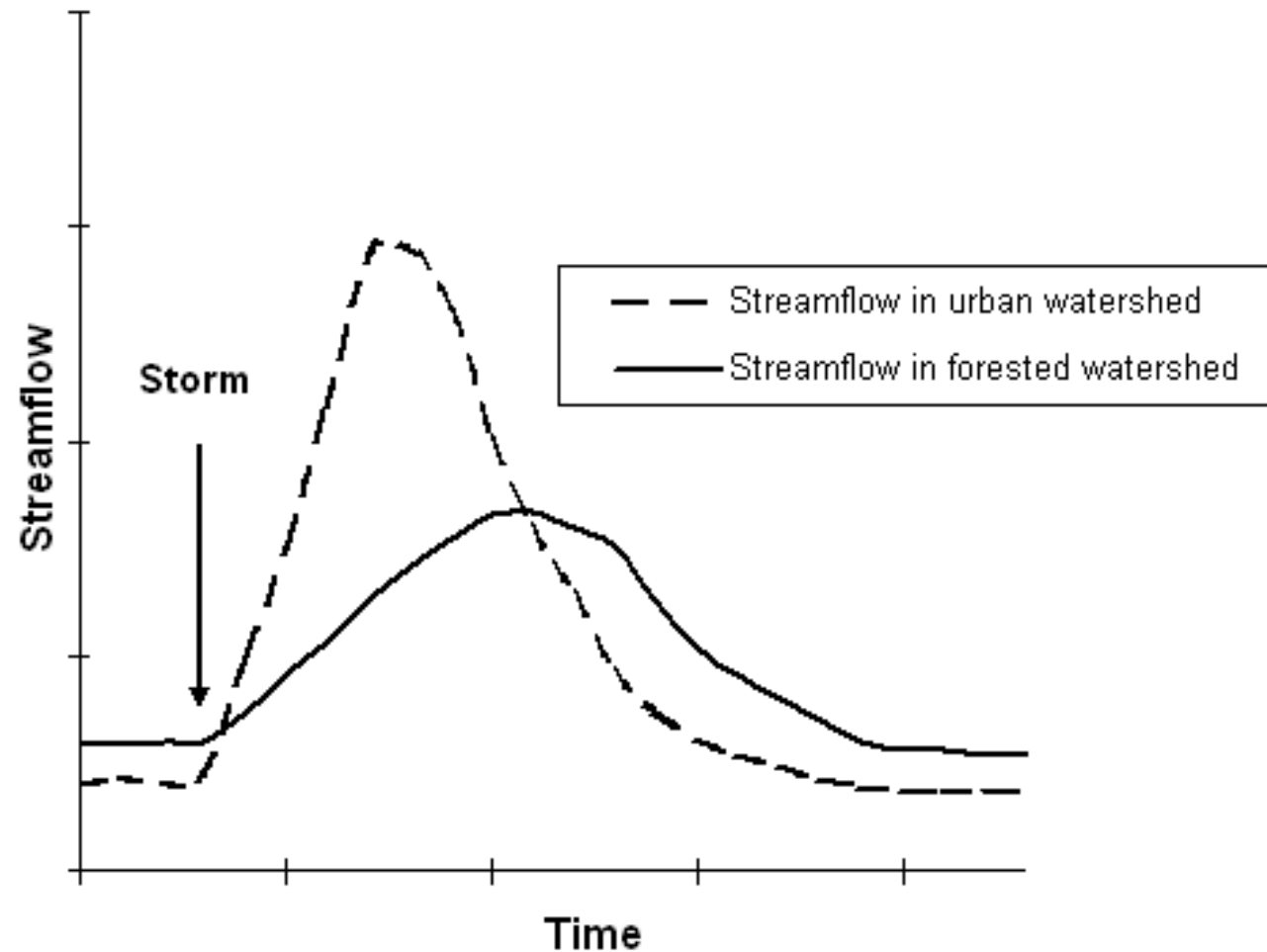


# Land Use in the Champlain Basin

## Land Use Categories



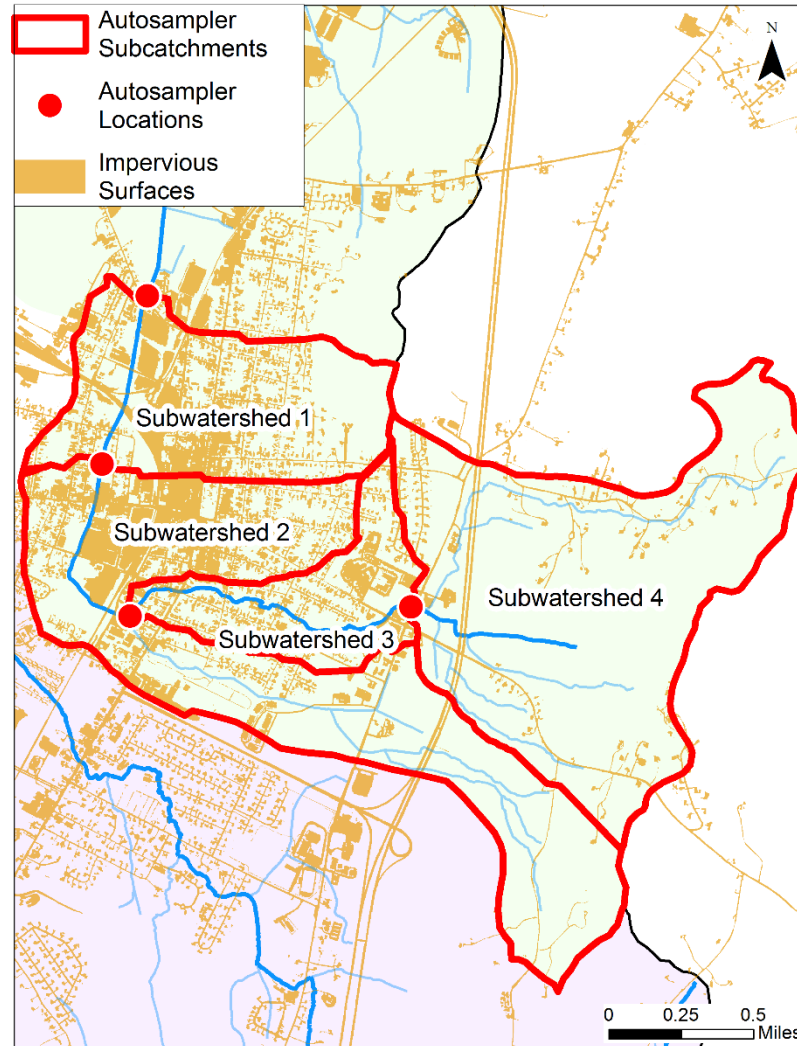
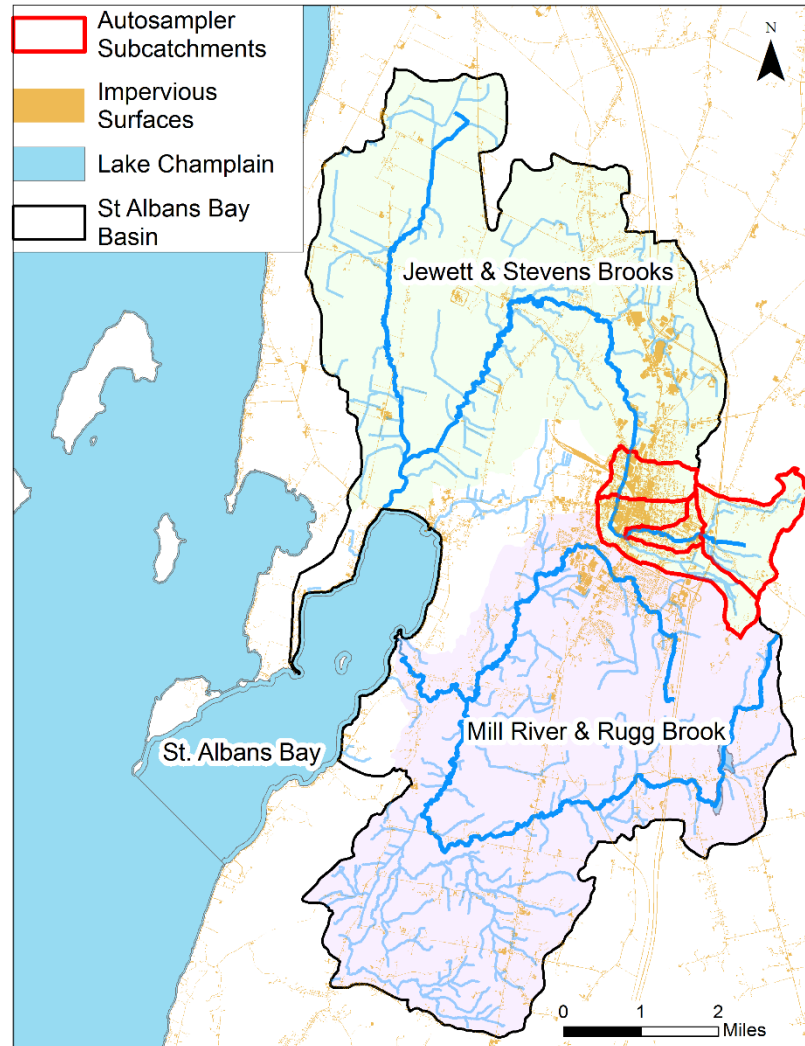
# Hydrological Response in an Urban Setting



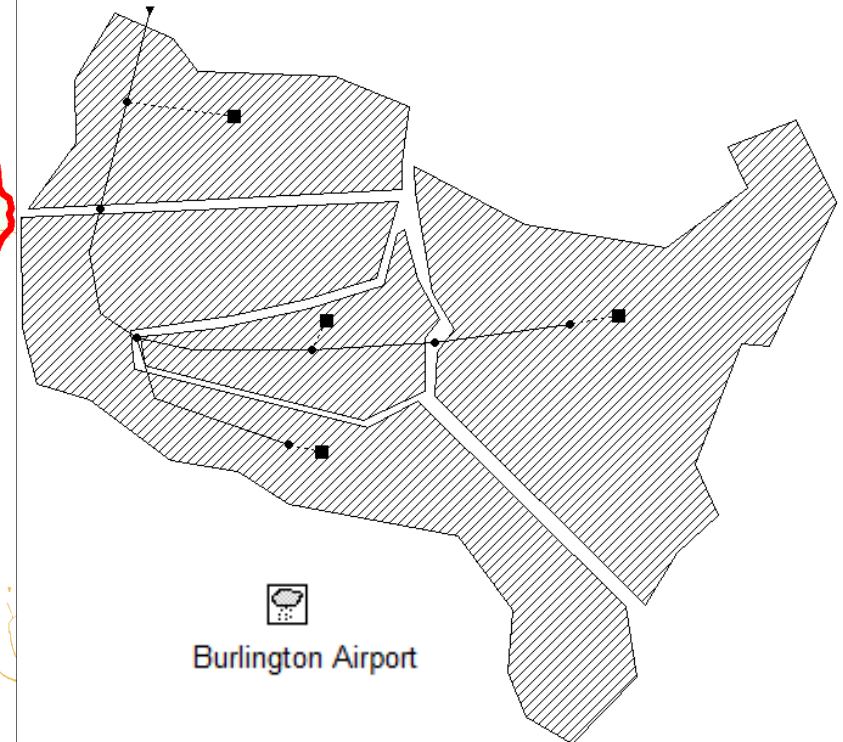
# Research Goals: Urban Hydrology

- Model hydrology and water quality across an urban gradient
- Understand variable risk and exposure to extreme events
- Explore use of adaptive intervention (green stormwater infrastructure) to mitigate exposure and risk

# Urban Model - SWMM

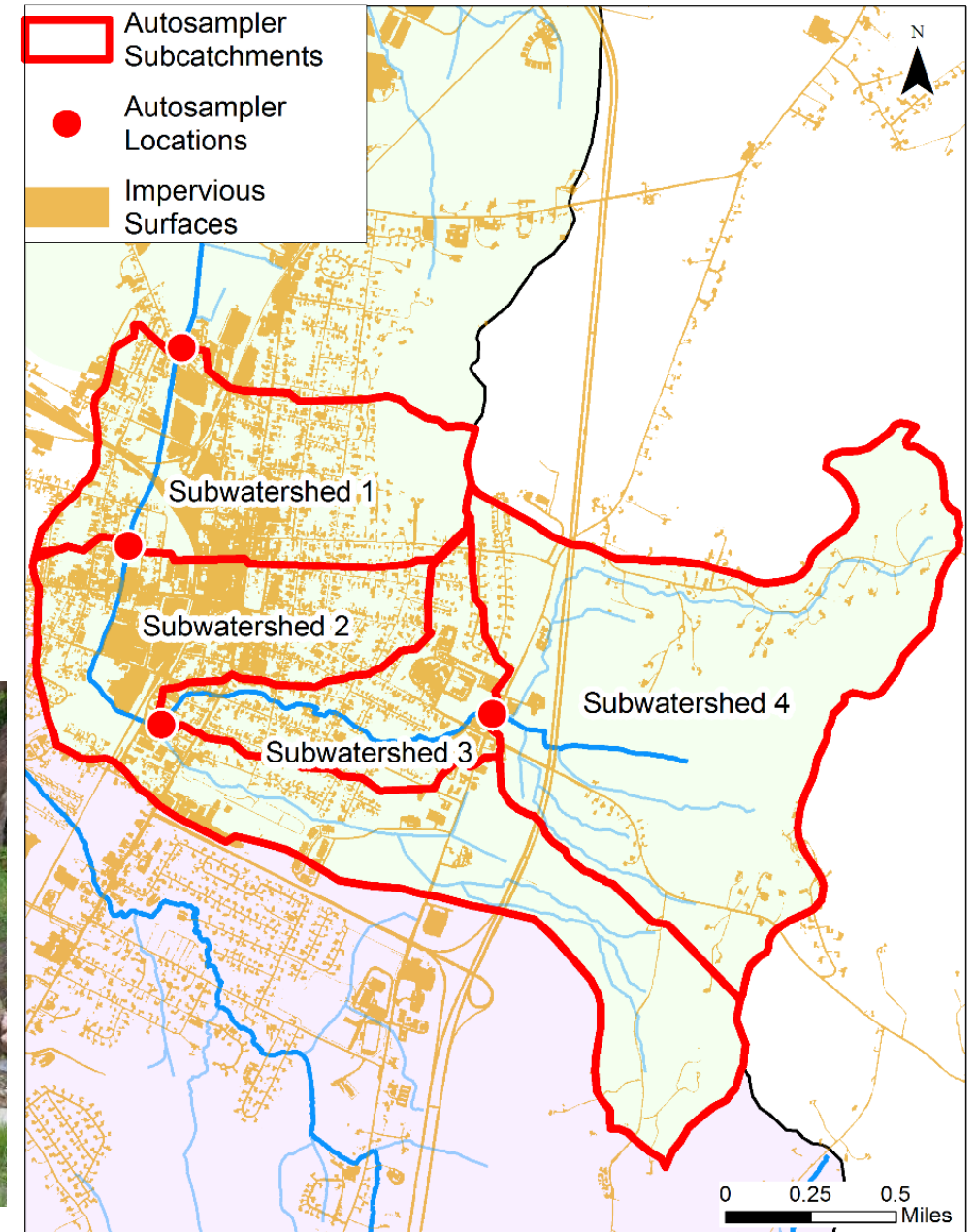


Model Input





# Summer 2018 Sampling



# Future Steps

- Modeling an urban watershed in South Burlington: Potash Brook
- Incorporate SWMM's output into a large scale hydrologic model