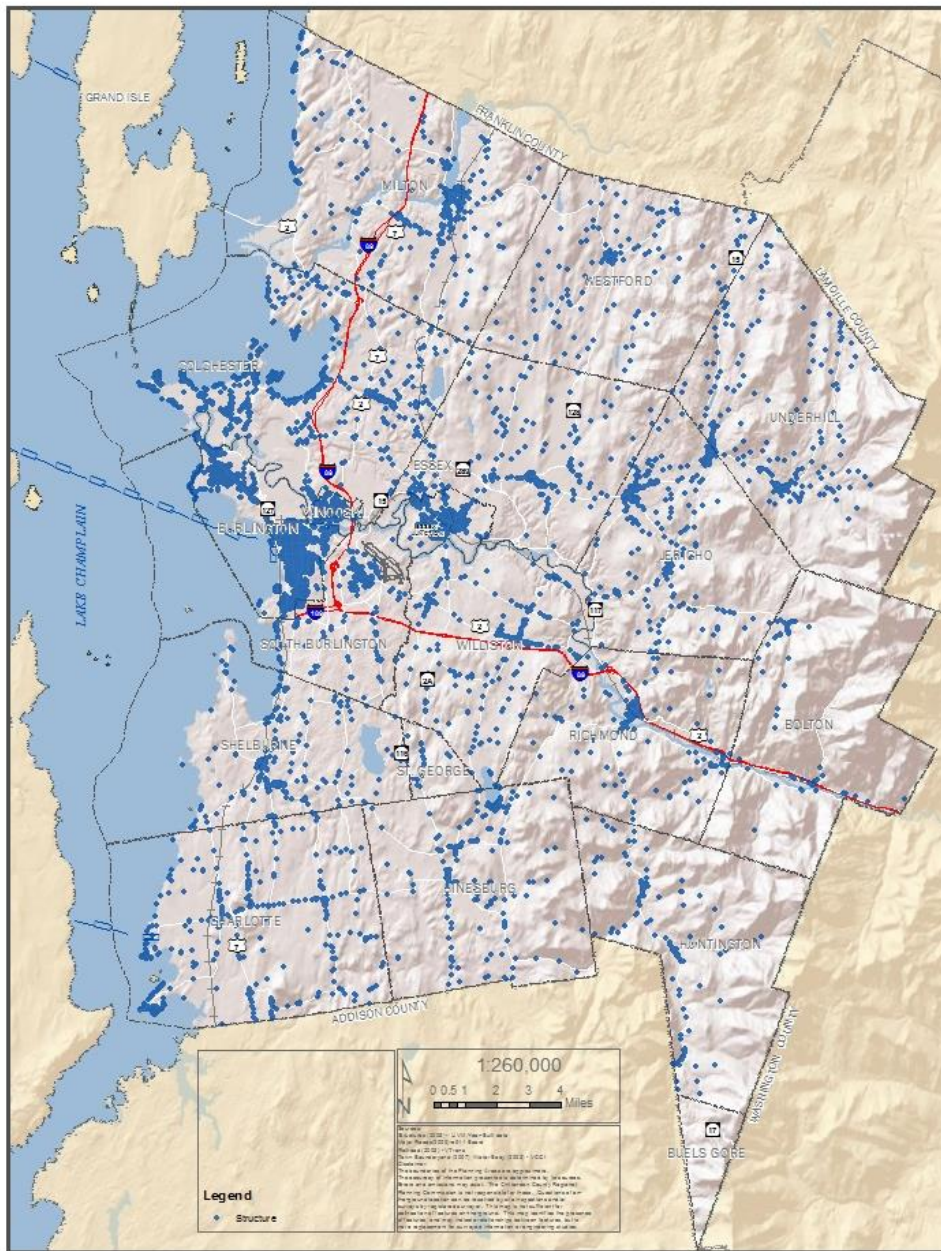


Land Use Scenario Considerations

VT EPSCoR Policy & Technical
Advisory Committee
Charlie Baker, CCRPC



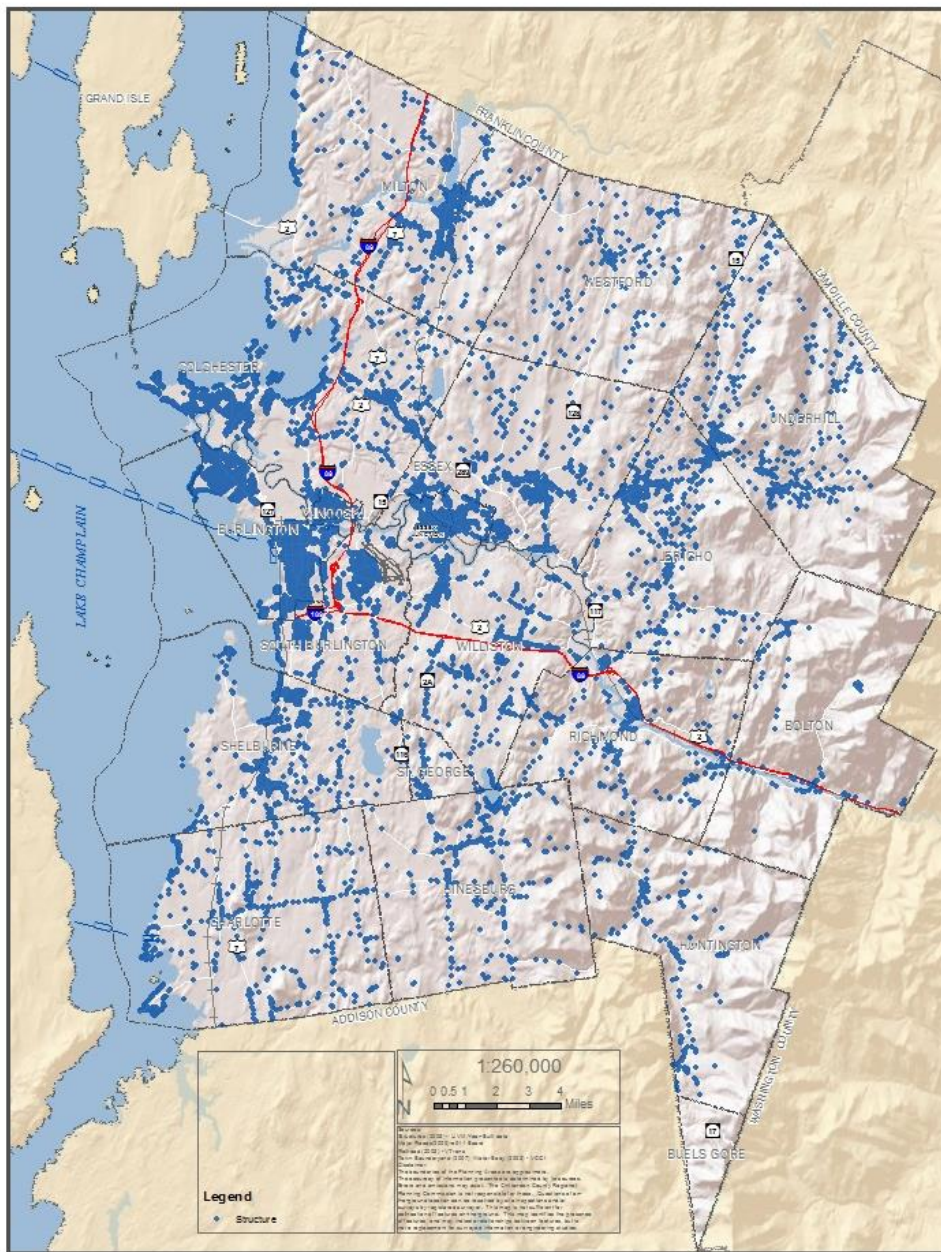
Structures Built by 1950

Chittenden County, Vermont

DRAFT

Note: Data used is best available. Not all structures in county are represented here.

September, 2011



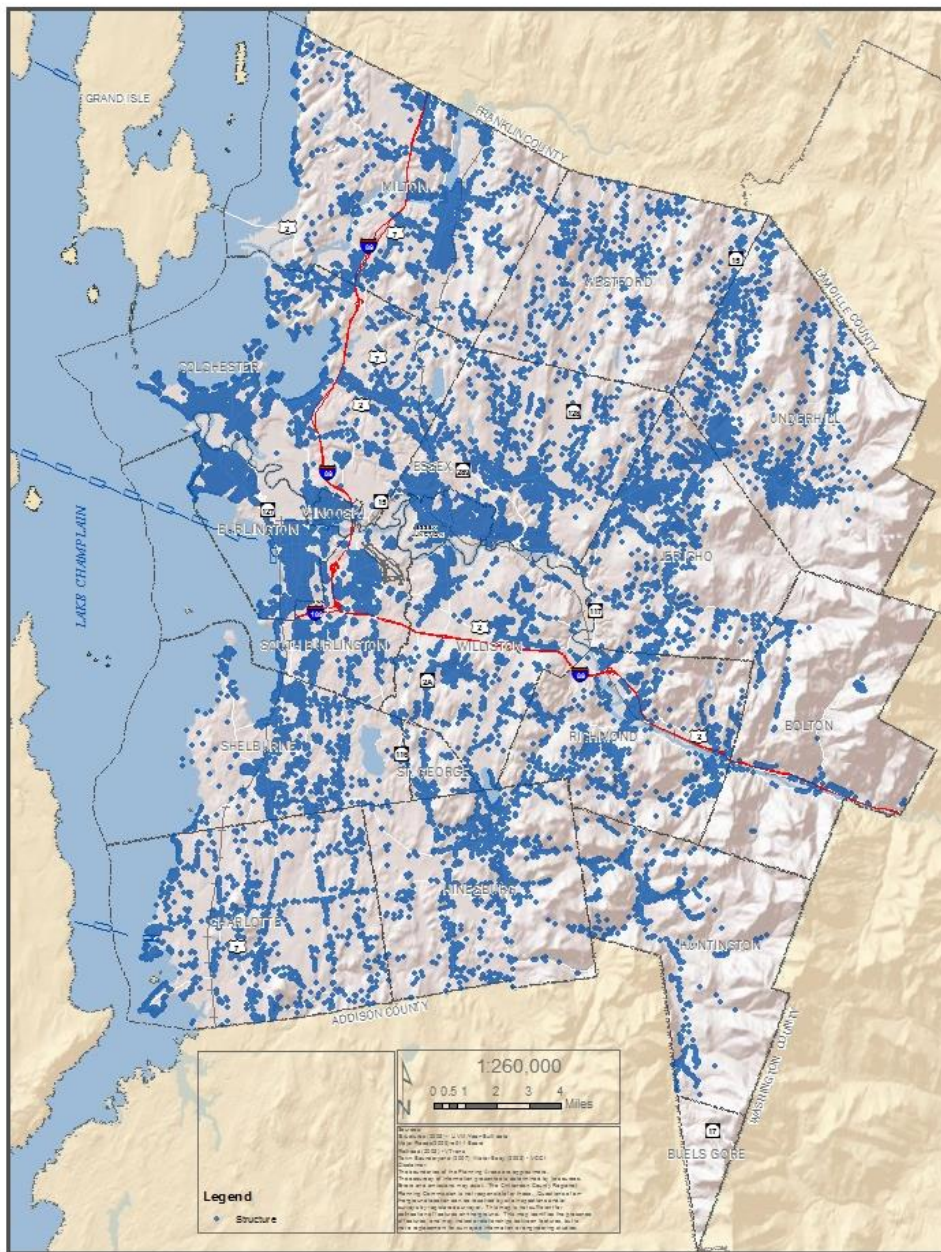
Structures Built by 1970

Chittenden County, Vermont

DRAFT

Note: Data used is best available. Not all structures in county are represented here.

September, 2011



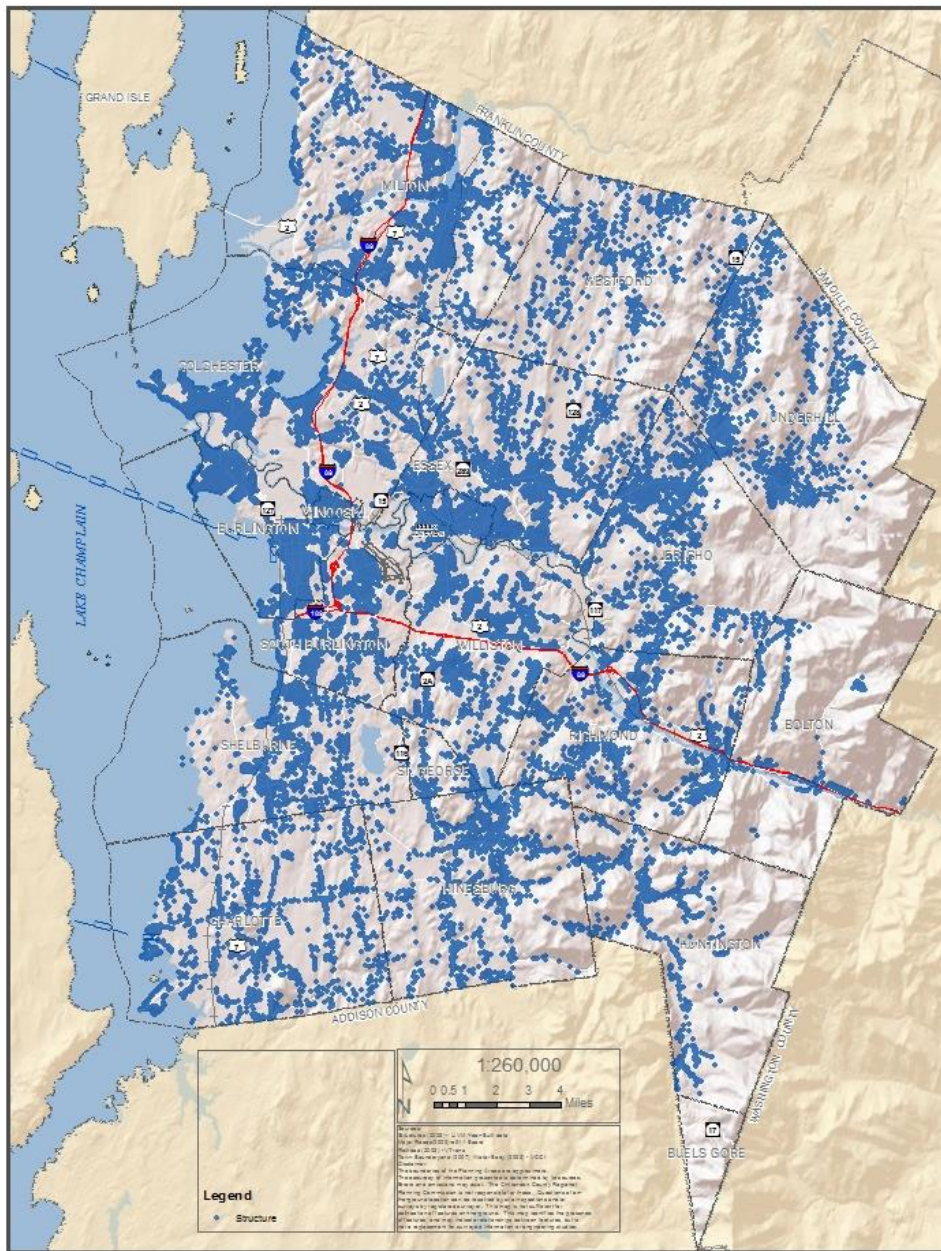
Structures Built by 1990

Chittenden County, Vermont

DRAFT

Note: Data used is best available. Not all structures in county are represented here.

September, 2011



Structures Built by 2005

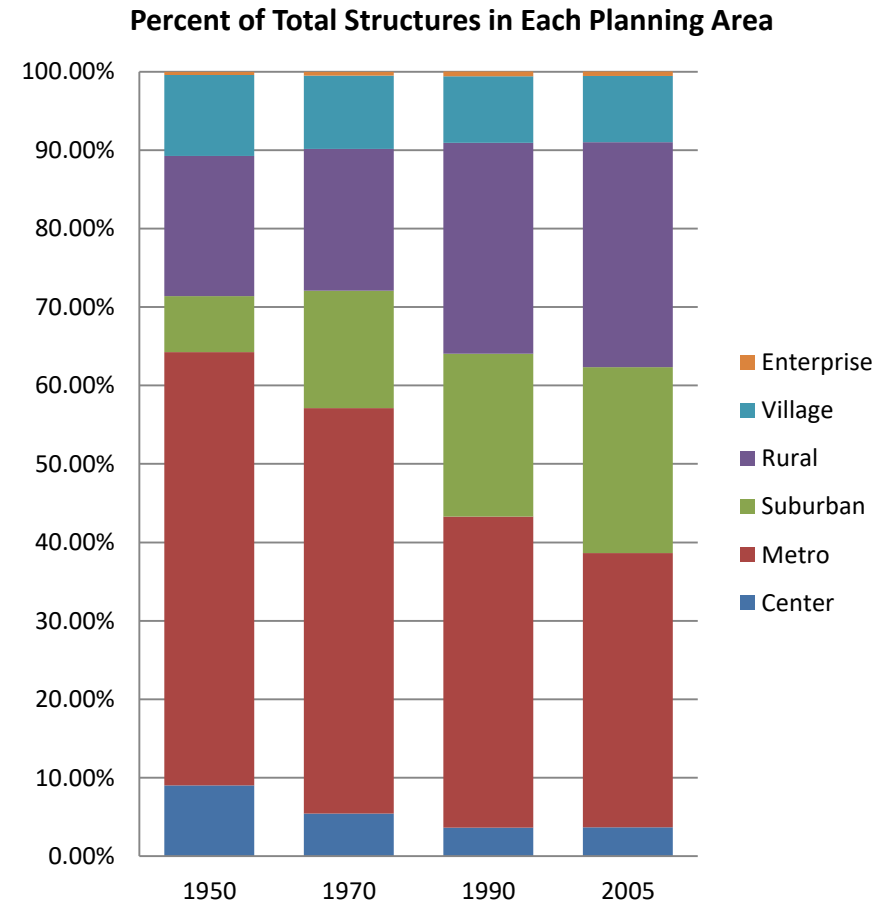
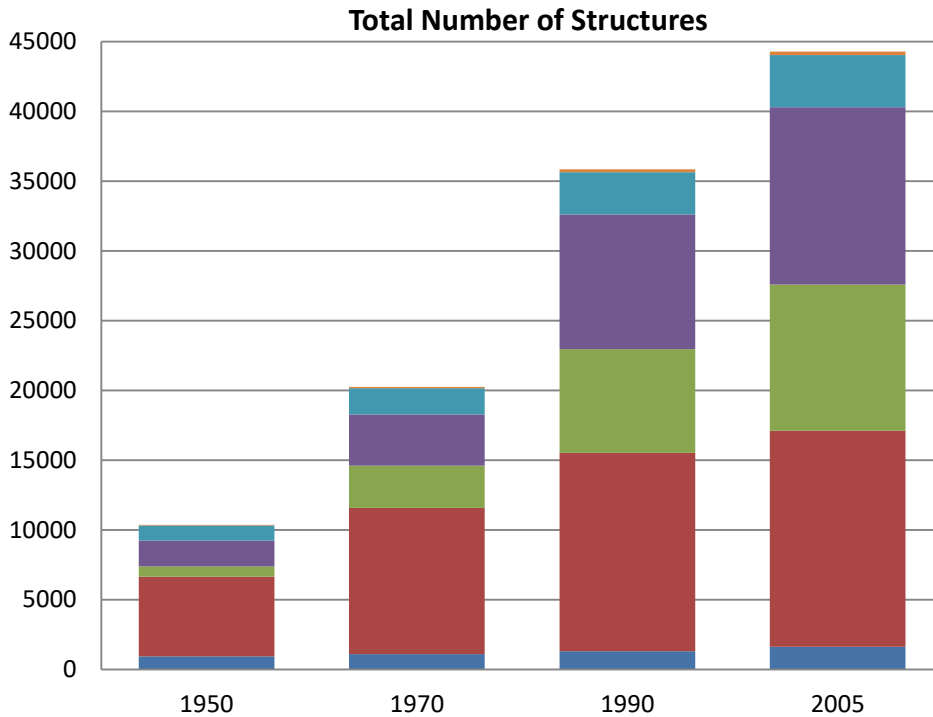
Chittenden County, Vermont

DRAFT

Note: Data used is best available. Not all structures in county are represented here.

September, 2011

Chittenden County development analyzed by Planning Area and year built.



Population Forecasts – Vermont

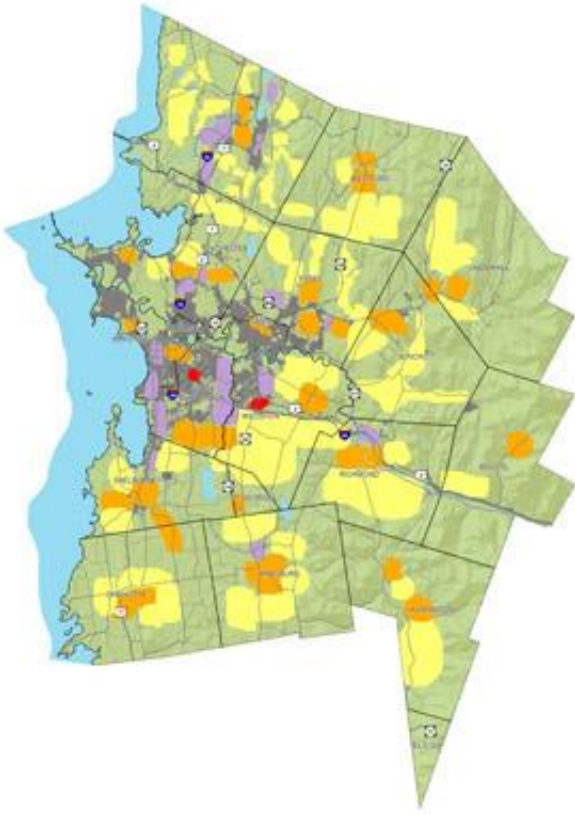
COUNTY	2016 POPULATION	2046 POPULATION	TOTAL CHANGE (PERSONS)	AVG. ANNUAL CHANGE (PERSONS)	AVG. ANNUAL GROWTH RATE
Addison County	37,100	39,280	2,180	72	0.196%
Bennington County	36,371	38,416	2,045	68	0.187%
Caledonia County	30,819	32,344	1,525	50	0.165%
Chittenden County	161,672	171,207	9,535	318	0.197%
Essex County	6,170	6,468	298	10	0.161%
Franklin County	48,873	51,447	2,574	86	0.176%
Grand Isle County	6,870	7,215	345	11	0.167%
Lamoille County	25,267	26,516	1,249	42	0.165%
Orange County	28,938	30,385	1,447	48	0.167%
Orleans County	27,137	28,531	1,394	46	0.171%
Rutland County	59,787	62,381	2,594	86	0.145%
Washington County	58,687	61,580	2,893	96	0.164%
Windham County	43,434	45,478	2,044	68	0.157%
Windsor County	55,793	58,376	2,583	86	0.154%
Vermont Statewide	626,918	659,625	32,706	1,090	0.174%

Future Forecasts – Chittenden County

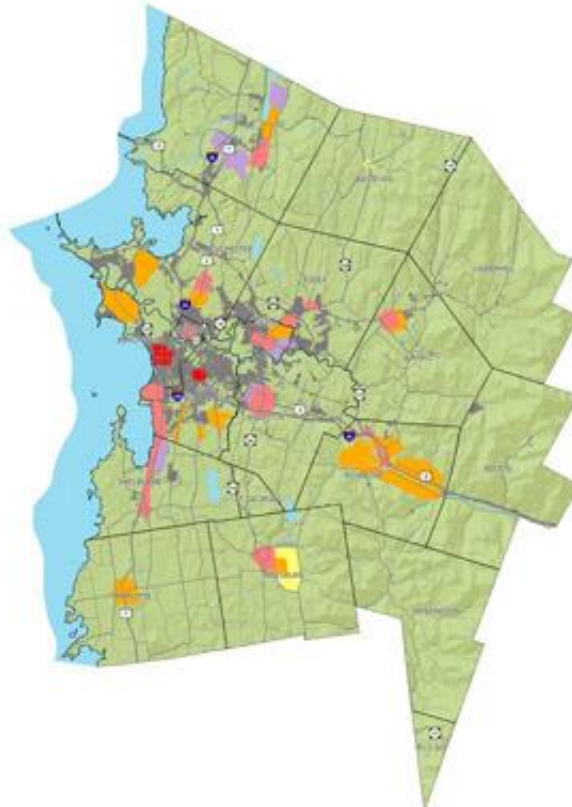
	<u>2015</u>	<u>2050</u>	
• Population	161,382	183,172	14%
• Employment	135,511	182,688	35%
• Household	63,498	79,151	25%

Chittenden County Future Land Use Scenarios - 2011

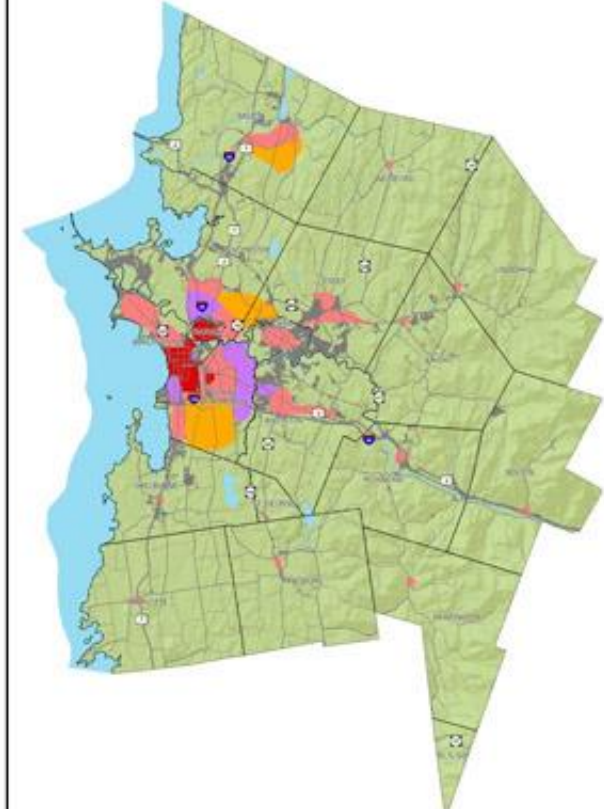
TREND SCENARIO



WORKSHOP SCENARIO



CORE SCENARIO



Legend

-  CITY CENTER
-  EMPLOYMENT CENTER
-  MIXED USE CENTER
-  NEIGHBORHOOD
-  LOW DENSITY HOUSING
-  EXISTING DEVELOPED AREA
-  OPEN SPACE/ LITTLE OR NO NEW DEVELOPMENT

Scenario Measures

TABLE 1: INDICATOR RESULTS FOR SCENARIOS RELATIVE TO 2005 CONDITIONS

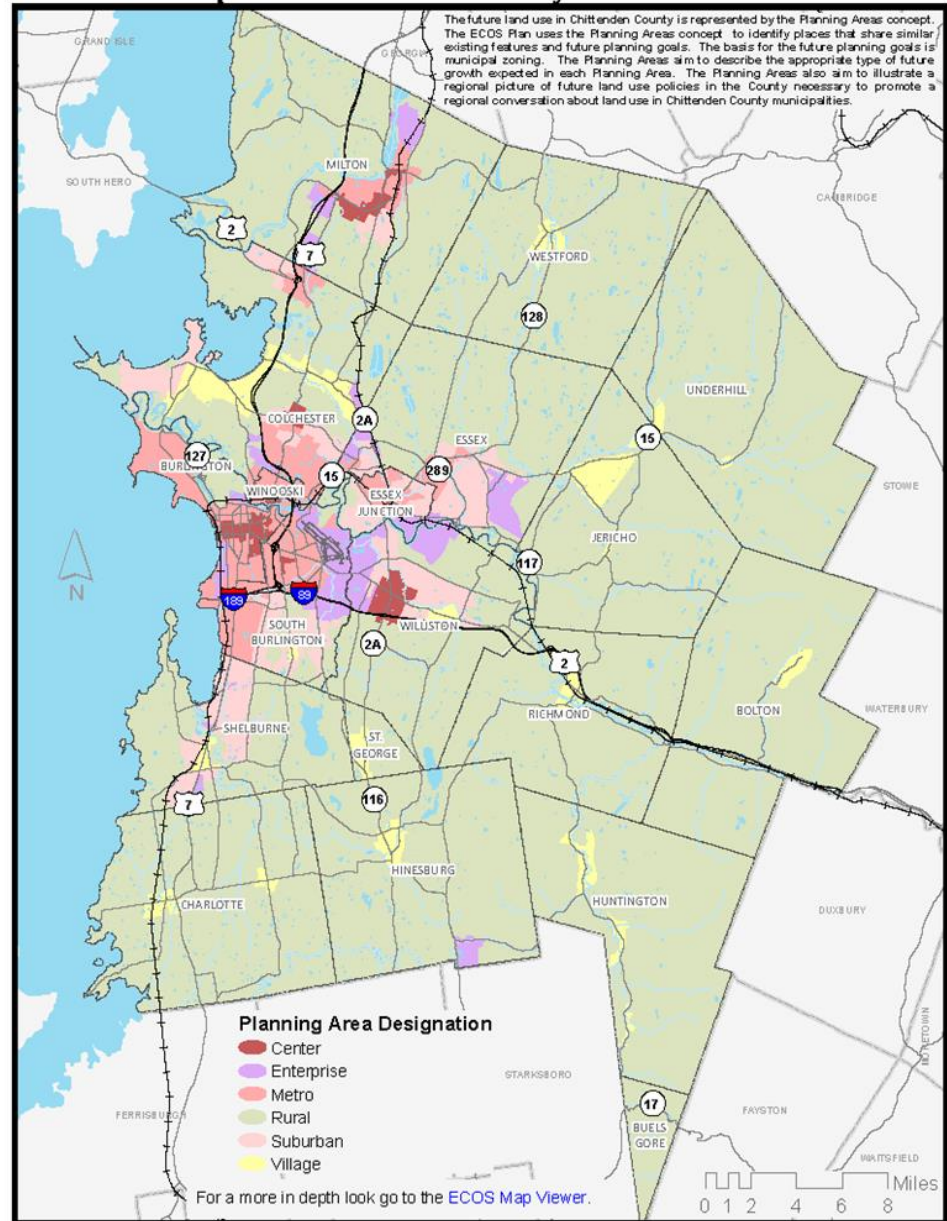
	2005	Trend	Workshop	Core
Congestion (Weekday PM Peak Hour Annual Vehicle Hours of Delay)	6.6	15.4	13.6	10.4
Weekday Daily Greenhouse Gas Emissions (tons)	1,790	2,550	2,500	2,260
Annual Transit Ridership (million boardings)	1.9	4.1	5.8	10.8
Percent of Daily Trips by Walking or Bicycling	4.8%	4.3%	5.0%	8.3%
Land Consumption (square miles)	-	124	25	25

Future Land Use

Objective:

80% of Future
Housing units in
15% of County

Map 2 - Chittenden County Future Land Use

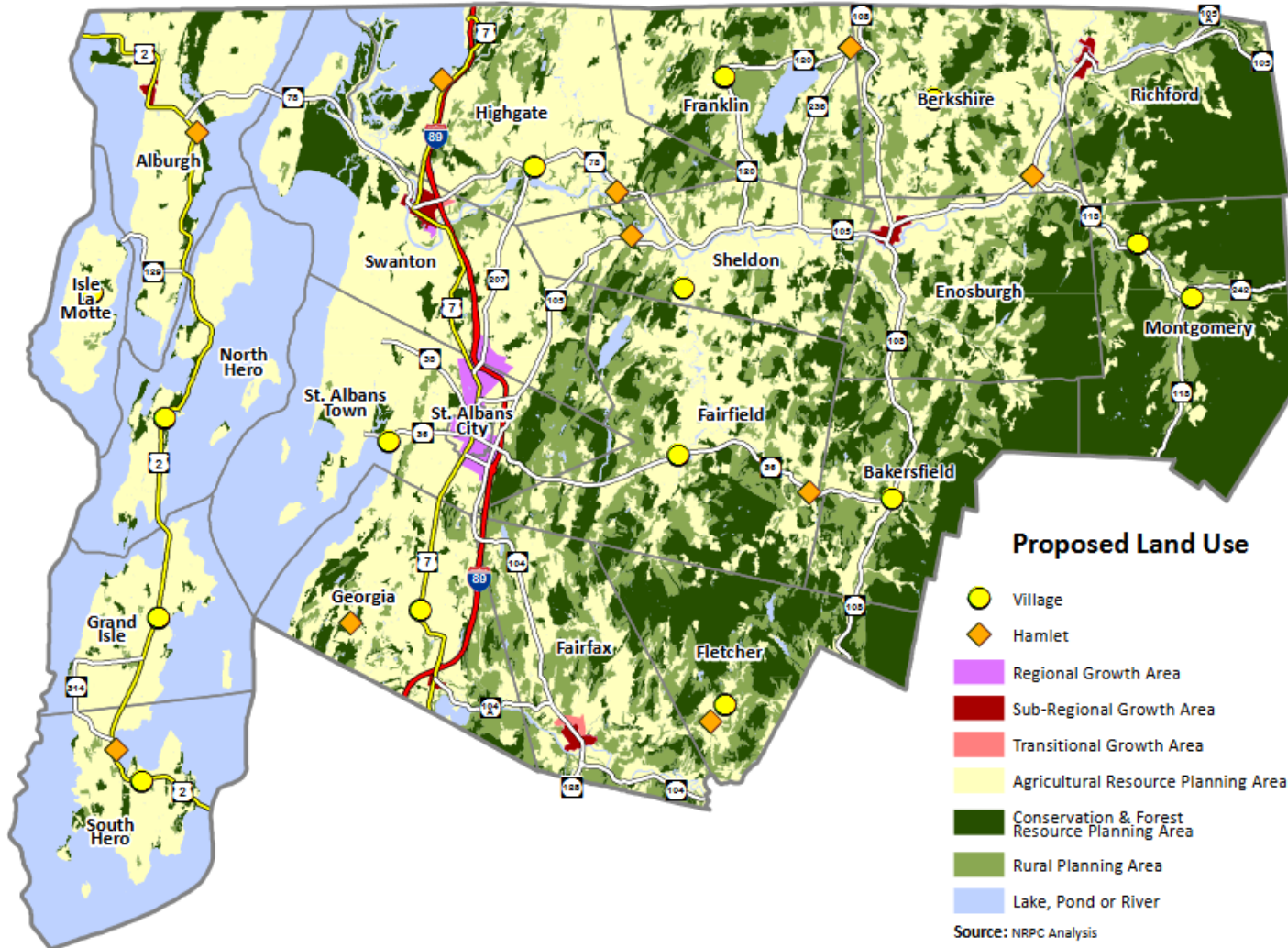


Chittenden County Recent Trends

- % of Land within regional plan Growth Areas: **15%**
- Increase in Residential Buildings from 2012 to 2017 in Region: **3,785**
- Increase in Residential Buildings within Growth Areas from 2012 to 2017: **3,098 or 82%**

Northwest RPC Future Land Use

MAP 8: PROPOSED LAND USE



Northwest RPC Recent Trends

- % of Land within regional plan Growth Areas: **1.1%**
- Increase in Residential Buildings from 2012 to 2017 in Region: **1,399**
- Increase in Residential Buildings within Growth Areas from 2012 to 2017: **112 or 8%**