

Highlights from the Interim Report on the Lake Champlain- Missisquoi Bay and Lake Memphremagog Reference to the IJC



PTAC

Burlington VT
30 November
2018

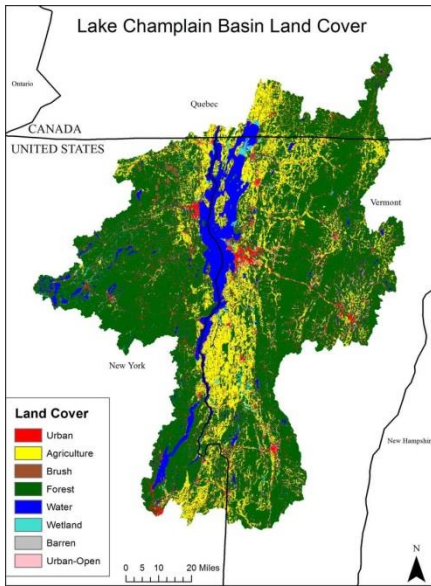


Topics to be Covered During This Briefing



- Issue and history
- Elements of the reference
 - Basin organizations
 - World literature review
 - Study advisory groups
 - Timeline
- Study approach
- Technical science/policy workshop

History of the Issue: Nutrient Loading and Harmful Algal Blooms in Lakes Champlain and Memphremagog

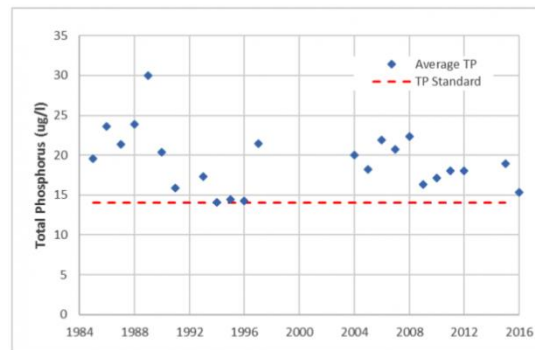
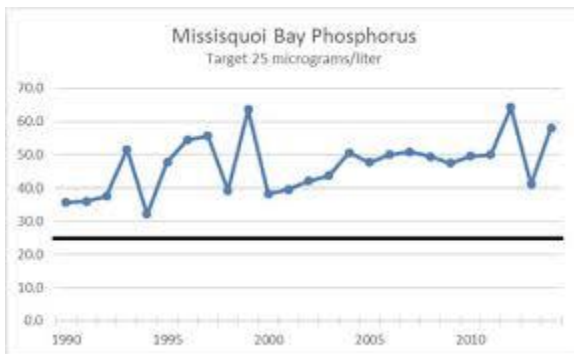


International Missisquoi Bay Task Force

Final report to the International Joint Commission



October 20, 2000



Phosphorus Loading in Missisquoi Bay



Statement and Report
to the
Governments of the United States and Canada
on the
Missisquoi Bay Critical Source Area Study

September, 2012



International Joint Commission
Canada and United States

Lake Champlain-Missisquoi Bay Portion of the Water Quality Reference

1. Relevant to the reduction of nutrient loading and the causes of harmful algal blooms in Missisquoi Bay and the broader Lake Champlain and Richelieu River, ***gather and review information*** from federal, provincial, state and municipal agencies, academic institutions, and other entities in the region on existing monitoring programs and measures being taken to address the aforementioned water quality concerns.
2. Based on the information collected, provide recommendations on how ***current efforts can be strengthened*** (e.g., summarizing gaps or opportunities, identifying possible approaches to strengthen collaboration, efficiency, or impact).

Lake Memphremagog Portion of the Water Quality Reference

3. In collaboration with relevant government agencies, academic institutions and other entities in the region, ***identify the range of nutrient loading issues that are of concern*** in the Lake Memphremagog basin and make recommendations on how ***current efforts can be strengthened***, including consideration of management approaches being taken for Lake Champlain and Missisquoi Bay that may be applicable.

Basin Organizations

Lake Champlain- Missisquoi Bay



Lake Memphremagog



Memphremagog
Conservation Inc.



Memphremagog
Watersheds
Association

Basin Organizations Have Exceptional Knowledge About Their Lakes

Phosphorus TMDLs for Vermont Segments of Lake Champlain

June 17, 2016

U.S. Environmental Protection Agency
Region 1, New England
Boston, MA

PLAN DIRECTEUR DE L'EAU
BASSIN VERSANT DE LA BAIE MISSISQUOI

Diagnostic 2015



LAKE MEMPHREMAGOG PHOSPHORUS TOTAL MAXIMUM DAILY LOAD

Approved: EPA Region 1, September 28, 2017

Vermont Department of Environmental Conservation

September
2017

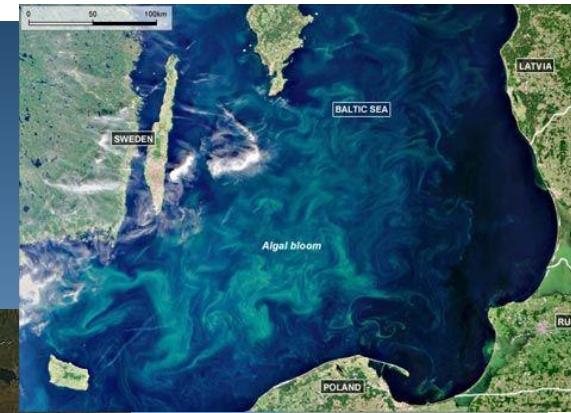
2018 STATE of the LAKE and Ecosystem Indicators Report



The Water Quality of Lake Memphremagog
Results of the Joint Quebec-Vermont Water Quality Monitoring Initiative
and
Recommendations for Strategy Development
Approved by the Quebec/Vermont Steering Committee on Lake Memphremagog
May 8, 2008
Prepared by the Monitoring and Assessment Work Group of the
Quebec/Vermont Steering Committee on Lake Memphremagog
Whose members represent:
Memphremagog Conservation, Inc.
Ministère du Développement durable, de l'Environnement et des Parcs
MRC de Memphremagog
Northwoods Stewardship Center
Vermont Agency of Natural Resources
City of Newport, Vermont
Ville de Magog, Quebec
Ville de Sherbrooke, Quebec

World Literature Review

- Purpose: to inform and support recommendations regarding nutrient loading and HABs, a review is sought on how other jurisdictions outside the region and around the world are addressing this water quality issue
- Focus: the frameworks, approaches and processes employed by government agencies and departments, academic institutions, and non-governmental organizations (NGOs) – both within countries and in multi-jurisdictional contexts



Study Advisory Groups (SAGs)

- Each basin has a study advisory group with binational representation
 - Champlain SAG
 - Memphremagog SAG
- SAG members will provide high level direction and advice to the basin organizations and the IJC on all major aspects of the study, including reports and preliminary recommendations

Communications Strategy

- Communications plan in place to inform the public of work being undertaken in each basin, provide progress updates and facilitate public participation
- IJC collaborating with basin organizations on communications activities to expand reach of messages
- Multiple communications channels (i.e., web pages, IJC blog posts, and public consultations) acknowledge and clarify areas of potential confusion between this and the LCRR flooding study
- Key messages reinforce IJC role in delivering on two distinct references
- Once clarified, messaging will acknowledge co-benefits,

Reference Timeline

Date	Activity or Milestone
October 2017	Receipt of the reference from governments
February 2018	Work plans submitted to the governments and posted on the IJC website: http://ijc.org/en_/LCLM and http://ijc.org/fr_/LCLM
April 2018	Contracts set with basin organizations
August 2018	Creation of the study advisory groups
October 2019	Completion of interim reports
Spring 2019*	<i>Technical science/policy workshops and public meetings/input in each of the basins</i>
October 2019	Transmission of final reports with recommendations to governments

Study Approach

- Science
 - What is known, not known, gaps
- Policy
 - Policies, regulations, programs, and outcomes of these
- Networking
 - Science and policy experts opinions
- Recommendations
 - Viable, long-term solutions, approaches to governments

Technical Science/Policy Workshop

- 40-50 people of science and policy experts
- Date TBD in April/May timeframe
- Objective are to:
 1. Review the draft document to ensure that the science is complete, accurate and interpreted correctly
 2. Review the policy to ensure it is complete, accurate and that outcomes have been assessed
 3. Pursue development of **recommendations** and ensure that the report supports these

Your Involvement

- Through the networking component of the approach
- Through your potential participation at the workshop
 - *Note, a planning committee is being struck from CSAG*
- Through the public input process/meetings

Thank you!

